

## Monthly Weather Summary in Thailand

March 2020

In March 2020, the weather condition was hot in most areas of Thailand almost the whole month with very hot in many places in the northern, northeastern and central parts as a result of the heat low pressure cell covering upper Thailand. The mean temperature in March 2020 were higher than normal in all parts and the new highest maximum temperature were established in some stations. However, due to the influence of the high pressure area from China extending its ridge to cover northeastern part and the South China Sea during the middle and the end of the month in addition with the periodical prevailing of the southerly and southeasterly wind over upper Thailand which bring the moisture from the Gulf of Thailand caused unusual rainfall with thundershower and gusty wind in many areas and hail in some places and temperature relatively decreased at that time. In southern part, the easterly wind prevailed over the Gulf of Thailand and the southern part mostly weak. The southern Thailand had less rainfall than other parts and hot weather especially along the west coast. Monthly rainfall was below normal in most parts of the country i.e., northern part 13.1 mm (47%), central part 16.9 mm (47%), eastern part 5.5 mm (9%), southern part (east coast) 65.4 mm (96%) and southern part (west coast) 65.9 mm (74%) while there was above normal rainfall in the northeastern part 15.5 mm (35%). The average amount of rainfall in March 2020 was lower than normal with the deviation of 19.2 millimeter or about 39%.

**1 – 10 March:** Heat low pressure cell covering upper Thailand and the southerly and southeasterly wind prevailing over the mentioned areas almost the whole period and the high pressure areas from China extended its ridge to cover northeastern part of Thailand and the South China Sea during the middle of the period. These conditions caused hot weather in most areas in upper Thailand almost the whole period and very hot weather in many areas during late period with extremely hot of 41.4 °C at Thap Phueng, Sri Samrong in Sukhothai province on March 9. For rainfall, upper Thailand received unusual rainfall mainly during the middle of the period especially in the northeastern part that obtained scattered to fairly widespread rain with heavy rainfall in some areas. The maximum daily rainfall of 82.3 millimeter was recorded at Wanon Niwat in Sakon Nakhon province on March 3. Thunderstorms with gusty wind was observed at Si Phichit, Sakon Nakhon, Loei, Nong Khai, Udon Thani, and Nong Bua Lamphu provinces on March 3 and at Phayao and Phitsanulok provinces on March 3 and at Chiang Rai, Phrae, Kamphaeng Phet, Khon Kaen, Mahasarakham, Kalasin and Roi Et provinces on March 4 and at Uthai Thani province on March 5. In southern Thailand, the easterly wind which prevailed over the Gulf of Thailand and southern part was weak causing less rainfall in southern part with isolated to scattered rain and heavy rainfall in some areas. The highest daily rainfall was 45.2 mm at Trang Rubber Experimental Station in Trang province on March 5

**11 – 20 March:** Heat low pressure cell still covered over upper Thailand throughout the period and the high pressure areas extended its ridge to cover northeastern and the South China Sea during mid-period with the prevailing of the southerly and southeasterly wind over the northeastern, central and eastern parts during the middle and the end of the period. These caused generally hot weather in upper Thailand with very hot weather in many areas during early period after that temperature relatively decreased in many areas for few days and risen until the weather became hot with very hot in some areas at the end of the period. The highest maximum temperature was 42.4 °C at Amphoe Mueang in Tak province on March 13. For rainfall, isolated rain with heavy rainfall in some areas was observed in upper Thailand for few days with the maximum daily rainfall of 105.4 millimeter at Lop Buri Rice Research Station in Lop Buri province on March 14. Thundershower was observed at Lampang, Tak, Uttaradit, Nakhon Ratchasima, Ang Thong, Phra Nakhon Si Ayutthaya, Bangkok Metropolis, Nonthaburi and Samut Prakan provinces on March 15 and at Nong Khai, Udon Thani and Amnat Charoen provinces on March 19 and at Phetchabun, Phitsanulok, Loei, Nong Bua Lam Phu, Khon Kean, Nakhon Phanom, Kalasin, Roi Et and Nakhon Ratchasima provinces on March 20. Gusty wind was reported at Roi Et, Yasothon, Buriram and Nakhon Nayok provinces on March 14. In southern part, with the prevailing of the easterly wind over the Gulf of Thailand and southern part, isolated rain was found during the first half of the period. The highest daily rainfall was 32.4 millimeter at Amphoe Muang in Trang provinces on March 11.

**21 – 31 March:** With the covering of heat low pressure cell over upper Thailand throughout the period and the prevailing of the southerly and southeasterly wind in addition with the passage of the westerly trough through the upper northeastern part during early period caused hot weather in general especially in the northern, northeastern and central parts that had successive hot day in many places during the second half of the period. The highest maximum temperature was 42.9 °C at Thoen in Lampang province on March 30 and March 31. For rainfall, isolated to scattered rain with heavy rainfall in some areas was observed in the northeastern part during the first half of the period whereas other parts received isolate rain with heavy rainfall in some areas for few days. The maximum daily rainfall in upper Thailand was 65.0 mm at Khao Saming in Trat province on March 30. Thunderstorm was observed at Phichit province on March 21, at Loei, Nakhon Phanom and Chon Buri provinces on March 23 and at Udon Thani and Ubon Ratchathani provinces on March 24 with hail at Nong Khai on March 21. In southern part, isolate rain with heavy rainfall in some areas with highest daily rainfall of 65.4 millimeter at Wang Wiset in Trang province on March 24.

### Breaking record of daily maximum temperature over Thailand in March 2020

Station	New Record 2020		Previous Record		Start Year
	Temperature(°C )	Date	Temperature(°C )	Date / Year	
Mae Hong Son	41.5	31	41.0	31/2014	1955
Chiang Rai Agromet. Stn.	39.0	30	38.8	25/1992	1979
Chiang Mai	42.4	31	40.9	31/2005	1952
Sri Samrong Agromet. Stn. (Sukhothai)	41.4	9	40.7	31/2005	2000
Thoen (Lampang)	42.9	30,31	42.6	30/2004	2004
Bhumibhol Dam (Tak)	42.5	31	42.3	30/2004	1960
Tak Fa Agromet. Stn. (Nakhon Sawan)	40.4	11	40.2	19,22,24/2016	1969
Chai Nat Agromet. Stn.	41.2	28	40.5	22/2016	1970
Ayutthaya Agromet. Stn.	41.1	14	40.0	22/2016	1994
Phetchaburi	36.9	30	36.6	29/1984	1981
Phra Saeng (Surat Thani)	39.6	27	39.3	31/2014	1998
Chawang (Nakhon Si Thammarat)	39.8	31	39.5	17/2016	1998
Hat Yai (Songkhla)	38.9	9	38.6	23/2016	1973

**Note** : Rainfall, temperatures and natural disasters in this report were updated up to April 6, 2020.

Climatological Center  
 Meteorological Development Division  
 Meteorological Department

Monthly Current Report  
Rainfall and Accumulative Rainfall  
March 2020

Northern Thailand

Station	Temperature ( °c)		Rainfall (mm)		Accumulative rainfall (mm) Since 1 January	
	Mean	Above or below normal	Actual	Above or below normal	Actual	Above or below normal
Chiang Rai	26.1	1.5	0.8	-27.4	0.8	-48.7
Mae Hong Son	28.1	1.4	0.1	-16.7	0.1	-29.1
Phayao	28.5	2.1	0.0	-30.2	0.0	-45.1
Chiang Mai	29.4	2.3	5.1	-12.7	5.1	-25.8
Tha Wang Pha	27.8	1.9	15.0	-18.5	15.0	-34.5
Nan	29.2	2.4	1.5	-31.2	2.4	-46.6
Lamphun	29.4	1.7	2.0	-11.1	2.0	-18.8
Lampang	30.2	2.2	2.6	-20.2	2.8	-31.6
Mae Sariang	27.3	1.3	0.0	-14.2	0.0	-22.2
Phrae	30.1	2.2	2.3	-25.3	2.3	-39.9
Uttaradit	30.4	1.7	0.7	-22.7	0.7	-42.7
Bhumibol Dam	32.1	2.4	0.0	-21.1	0.0	-30.6
Tak	32.0	1.8	0.0	-12.1	0.0	-22.9
Mae Sot	28.6	1.4	0.0	-15.5	0.0	-25.4
Umphang	25.9	1.5	0.3	-47.6	0.3	-63.5
Phitsanulok	30.3	1.1	34.0	7.3	34.3	-9.8
Lom Sak	28.8	0.8	160.3	116.5	160.3	94.6
Phetchabun	30.2	1.5	43.1	-4.8	43.1	-26.5
Wichian Buri	30.8	1.3	28.7	-21.9	28.7	-42.2
Kamphaeng Phet	30.5	1.8	3.5	-33.2	7.7	-44.4
Over the area	29.3	1.7	15.0	-13.1 -47%	15.3	-27.8 -65%

Northeastern Thailand

Station	Temperature ( °c)		Rainfall (mm)		Accumulative rainfall (mm) Since 1 January	
	Mean	Above or below normal	Actual	Above or below normal	Actual	Above or below normal
Nong Khai	29.2	1.6	55.2	15.4	55.2	-10.2
Loei	28.0	1.1	86.2	46.9	86.2	24.6
Udon Thani	28.8	0.8	110.5	60.8	110.5	32.5
Nakhon Phanom	28.3	1.3	88.1	28.0	88.6	-5.5
Sakon Nakhon	28.2	1.0	120.2	62.7	141.1	49.6
Mukdahan	29.4	1.7	45.8	7.0	50.2	-9.7
Khon Kaen	29.6	1.1	95.1	53.0	95.1	27.6
Kosum Phisai	29.9	1.5	115.3	63.5	118.2	47.9
Roi Et	30.1	1.9	53.2	12.0	56.5	-7.5
Chaiyaphum	30.8	2.0	32.4	-18.9	32.4	-37.7
Ubon Ratchathani	31.1	2.2	1.4	-29.1	2.3	-45.6
Tha Tum	30.0	1.3	19.2	-25.0	19.3	-46.1
Surin	30.9	2.2	1.9	-43.7	2.0	-60.7
Nakhon Ratchasima	30.8	1.9	34.5	-2.6	34.5	-26.9
Chok Chai	30.4	1.9	32.1	-5.4	32.1	-24.2
Nang Rong	29.8	1.4	72.8	24.9	75.2	3.0
Over the area	29.7	1.5	60.2	15.5 35%	62.5	-5.5 -8%

- NOTES :
- 1) Mean temperature is the average of daily dry-bulb temperature
  - 2) "T" is trace, rainfall amount less than 0.1 mm.
  - 3) "blank" is incomplete data.
  - 4) Temperature and rainfall are preliminary data.

Monthly Current Report  
Rainfall and Accumulative Rainfall  
March 2020

Central Thailand

Station	Temperature ( °c)		Rainfall (mm)		Accumulative rainfall (mm) Since 1 January	
	Mean	Above or below normal	Actual	Above or below normal	Actual	Above or below normal
Nakhon Sawan	31.9	1.7	20.4	-12.7	20.4	-28.9
Bua Chum	31.2	1.7	26.1	-19.7	26.1	-35.5
Lop Buri	30.9	1.4	37.6	5.5	37.6	-7.1
Suphan Buri	30.7	1.7	17.5	-1.4	17.5	-12.0
Thong Pha Phum	30.0	1.2	5.0	-41.4	5.0	-63.2
Kanchanaburi	31.1	1.4	14.4	-14.6	14.4	-36.1
Bangkok Airport	30.7	1.2	26.8	-13.6	46.4	-14.4
Bangkok Metropolis	30.2	0.7	5.0	-37.1	64.7	-10.7
Over the area	30.8	1.3	19.1	-16.9 -47%	29.0	-26.0 -47%

Eastern Thailand

Station	Temperature ( °c)		Rainfall (mm)		Accumulative rainfall (mm) Since 1 January	
	Mean	Above or below normal	Actual	Above or below normal	Actual	Above or below normal
Prachin Buri	31.0	1.5	12.9	-37.0	12.9	-60.5
Kabin Buri	30.0	0.9	63.1	11.6	68.7	-16.7
Aranyaprathet	30.7	1.1	96.1	43.7	96.1	10.7
Chon Buri	30.1	0.9	70.4	22.9	85.2	13.5
Ko Sichang	29.5	0.8	12.9	-36.7	12.9	-63.3
Pattaya	29.2	1.0	29.2	-24.1	30.2	-53.0
Sattahip	29.9	1.3	0.2	-58.6	15.0	-88.8
Rayong	29.7	0.7	2.1	-68.2	48.5	-79.0
Chanthaburi	29.3	1.2	113.1	41.2	165.9	38.9
Khlong Yai	29.0	1.1	166.4	51.1	275.7	37.2
Over the area	29.8	1.0	56.6	-5.5 -9%	81.1	-26.2 -24%

- NOTES :
- 1) Mean temperature is the average of daily dry-bulb temperature
  - 2) "T" is trace, rainfall amount less than 0.1 mm.
  - 3) "blank" is incomplete data.
  - 4) Temperature and rainfall are preliminary data.

Monthly Current Report  
Rainfall and Accumulative Rainfall  
March 2020

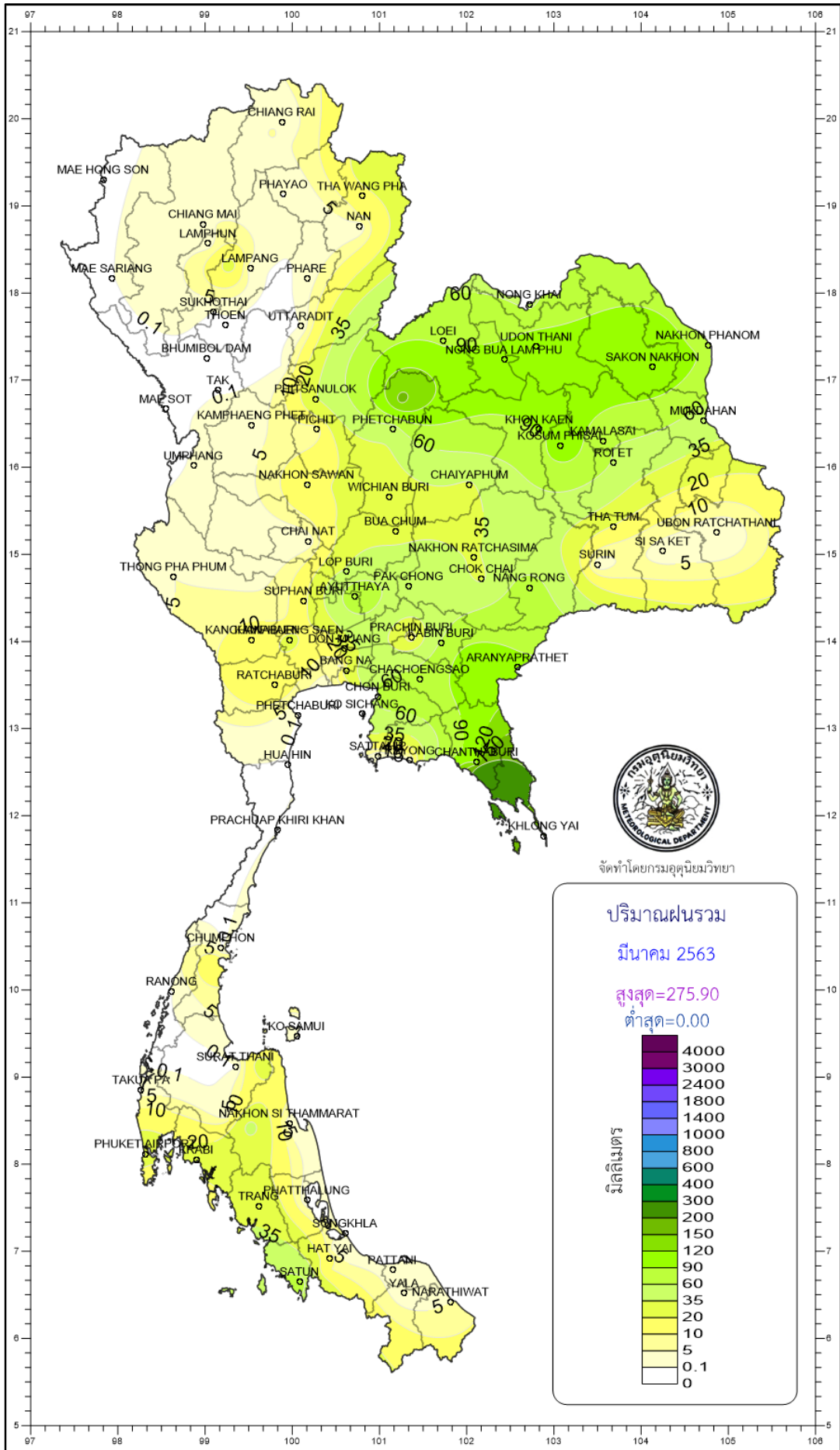
Southern Thailand, east coast

Station	Temperature ( °c)		Rainfall (mm)		Accumulative rainfall (mm) Since 1 January	
	Mean	Above or below normal	Actual	Above or below normal	Actual	Above or below normal
Phetchaburi	30.1	1.6	0.0	-33.1	7.3	-41.1
Hua Hin	29.5	1.1	0.0	-53.9	13.1	-67.9
Prachuap Khiri Khan	29.3	1.4	0.0	-71.8	27.8	-90.2
Chumphon	28.5	0.7	0.0	-97.2	215.8	14.5
Surat Thani	28.6	1.1	0.0	-24.0	10.6	-62.5
Ko Samui	28.8	0.6	0.0	-80.8	84.9	-136.5
Nakhon Si Thammarat	28.4	1.0	1.5	-88.2	67.7	-235.6
Songkhla	28.7	0.6	7.0	-52.7	72.9	-110.2
Hat Yai Airport	28.7	1.1	15.4	-59.7	46.6	-106.7
Pattani Airport	28.5	1.2	3.9	-45.5	36.4	-95.9
Narathiwat	28.2	0.9	5.0	-112.4	116.8	-155.9
Over the area	28.8	1.0	3.0	-65.4 -96%	63.6	-99.0 -61%

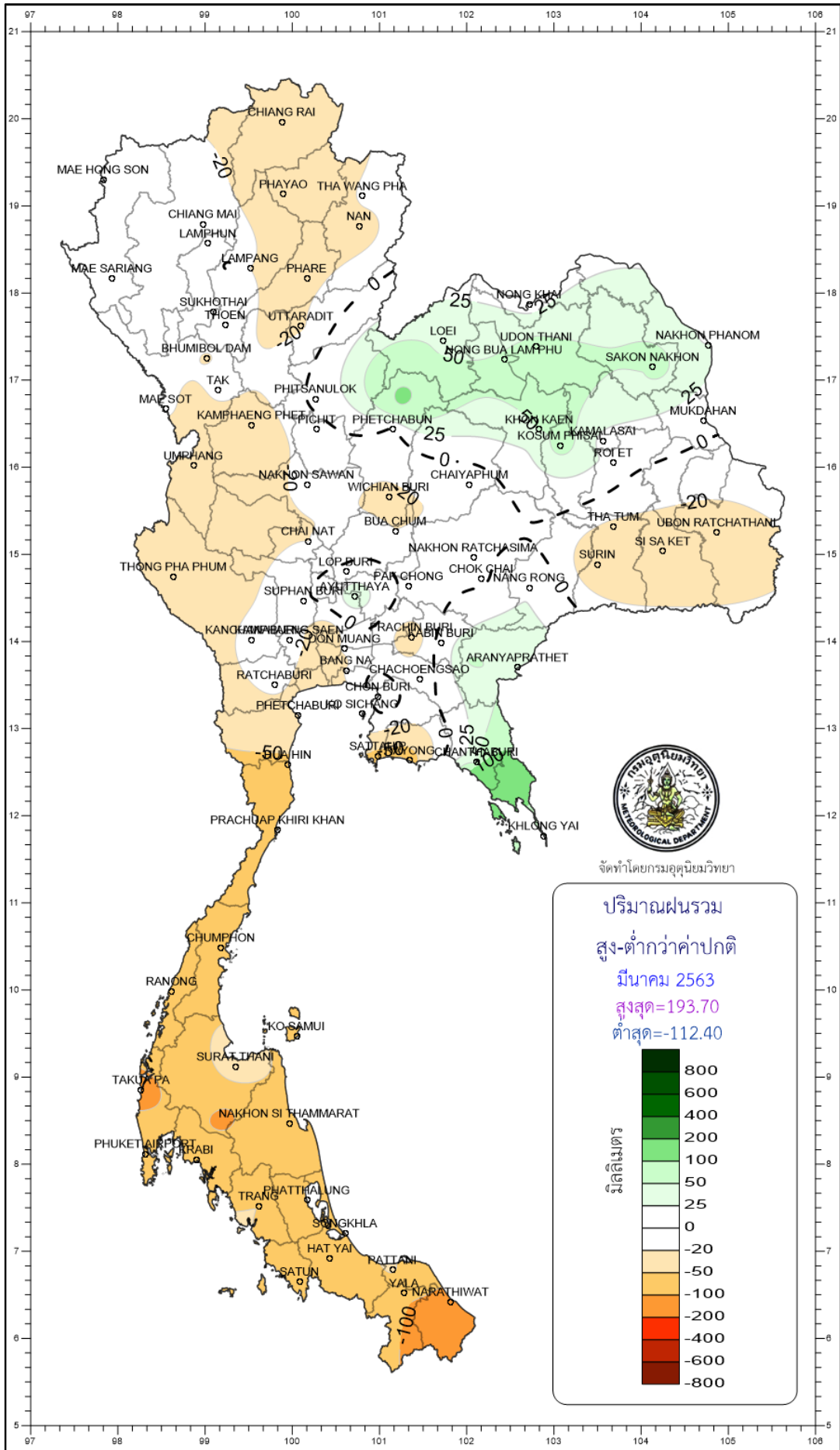
Southern Thailand, west coast

Station	Temperature ( °c)		Rainfall (mm)		Accumulative rainfall (mm) Since 1 January	
	Mean	Above or below normal	Actual	Above or below normal	Actual	Above or below normal
Ranong	29.3	0.9	0.0	-65.2	23.6	-67.6
Takua Pa	28.8	1.1	2.5	-112.1	5.6	-189.5
Phuket	30.9	1.7	11.0	-62.5	11.2	-116.5
Phuket Airport	29.4	1.1	31.0	-69.3	46.3	-117.4
Ko Lanta	29.3	0.5	13.4	-49.1	15.6	-79.8
Trang Airport	29.5	1.4	33.2	-50.2	55.8	-80.9
Satun	29.4	1.0	69.2	-52.8	121.0	-68.0
Over the area	29.5	1.1	22.9	-65.9 -74%	39.9	-102.8 -72%

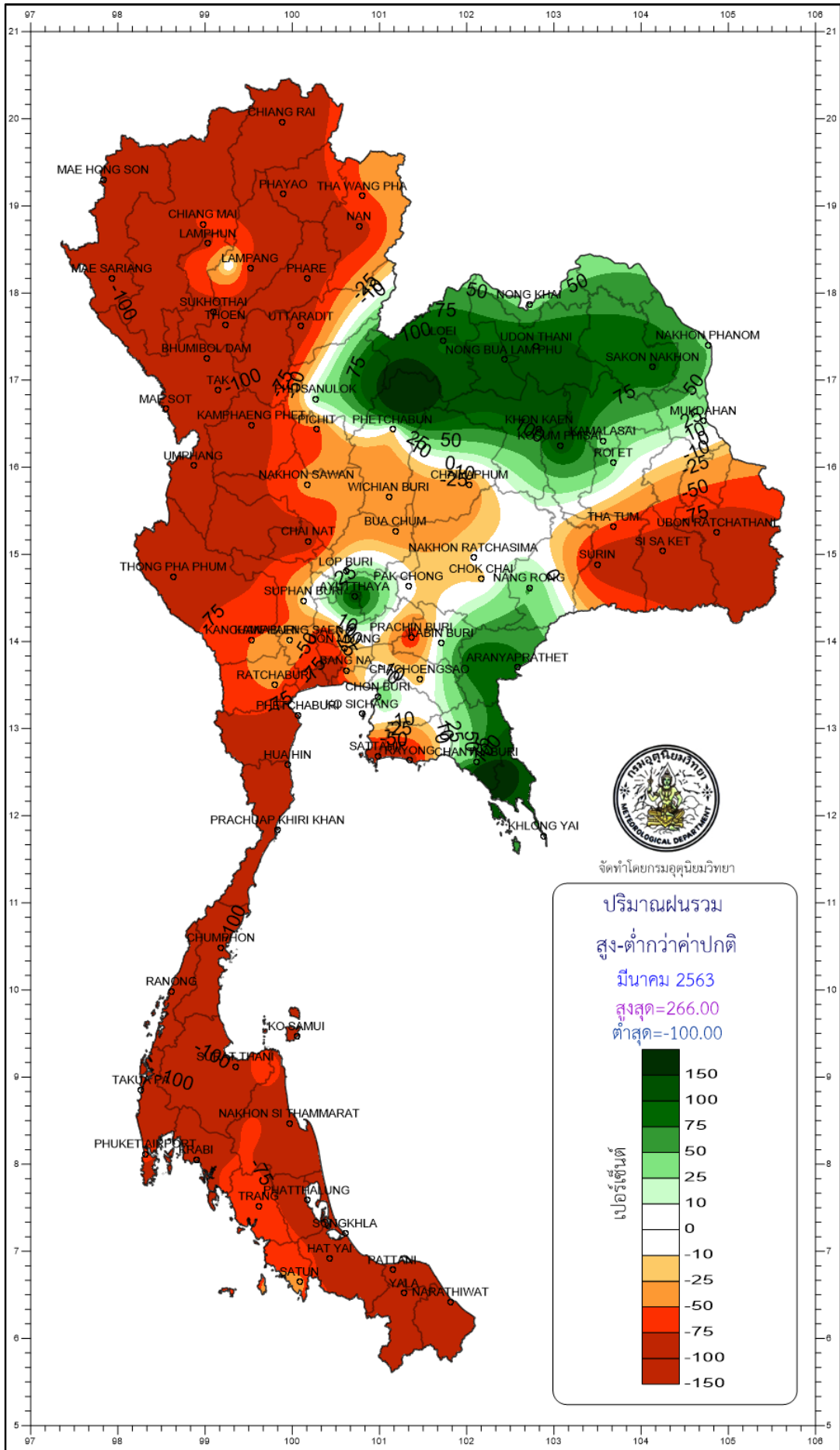
- NOTES :
- 1) Mean temperature is the average of daily dry-bulb temperature
  - 2) "T" is trace, rainfall amount less than 0.1 mm.
  - 3) "blank" is incomplete data.
  - 4) Temperature and rainfall are preliminary data.

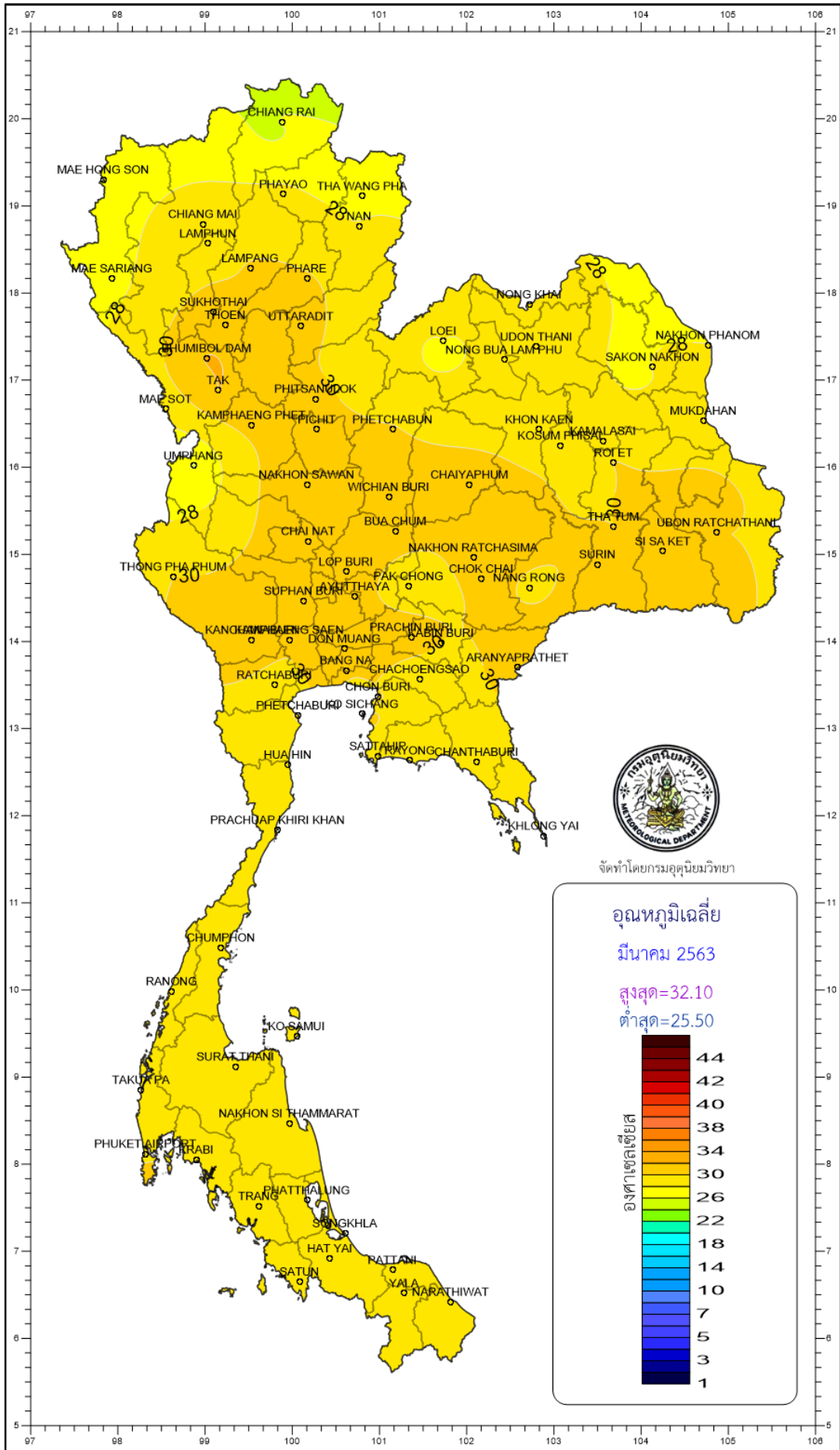


จัดทำโดยกรมอุตุนิยมวิทยา

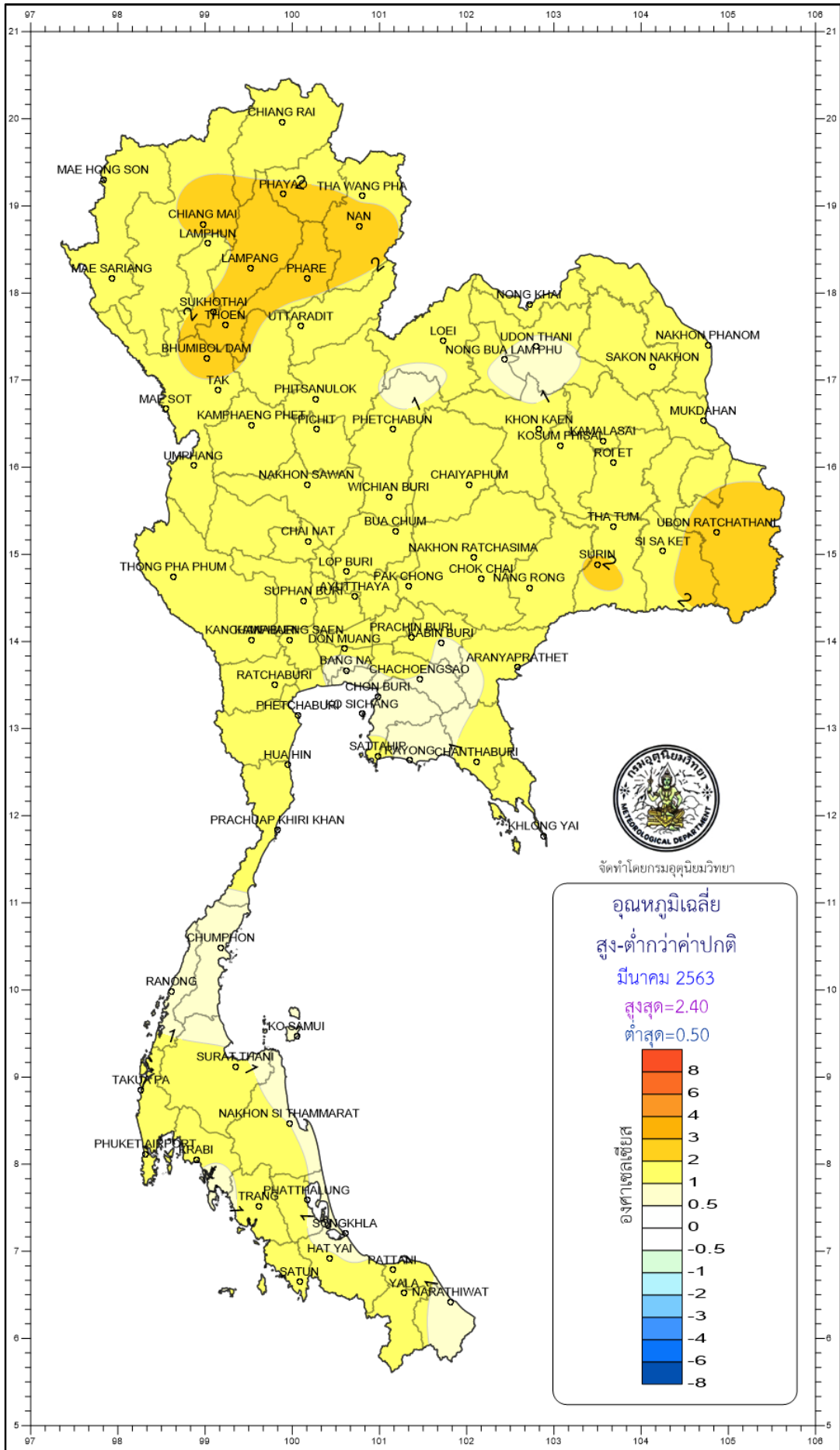




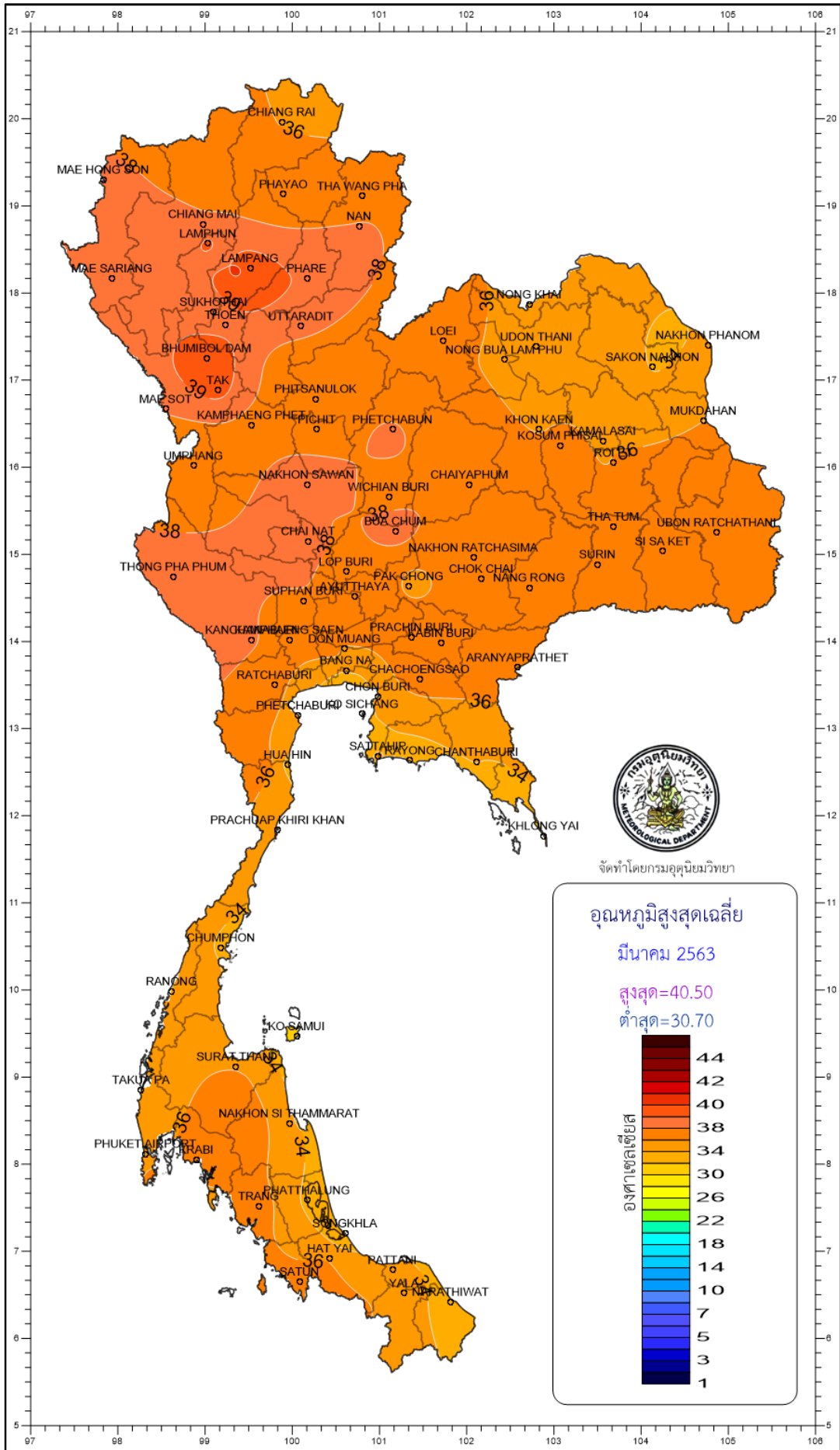




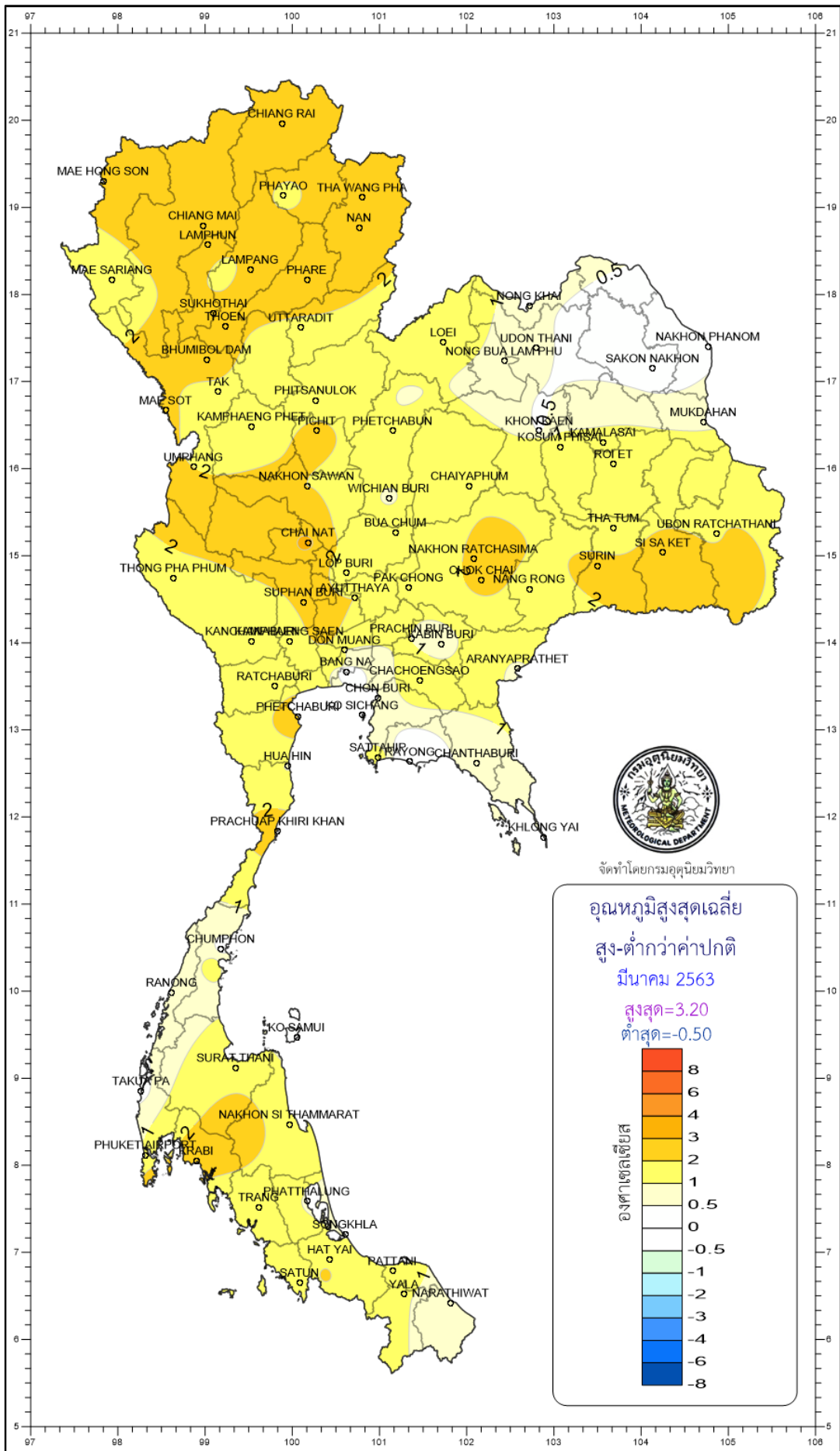
จัดทำโดยกรมอุตุนิยมวิทยา

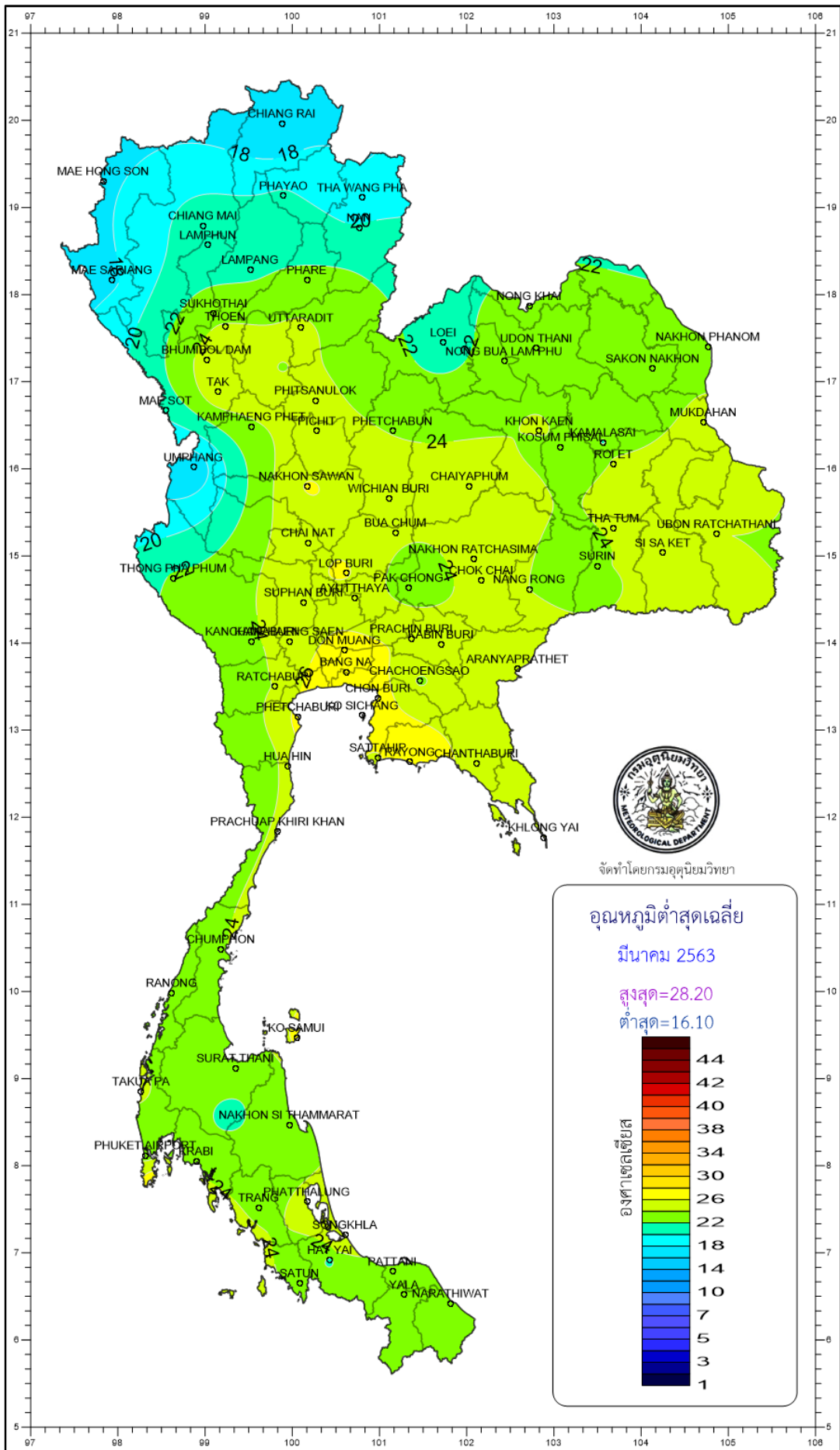


จัดทำโดยกรมอุตุนิยมวิทยา

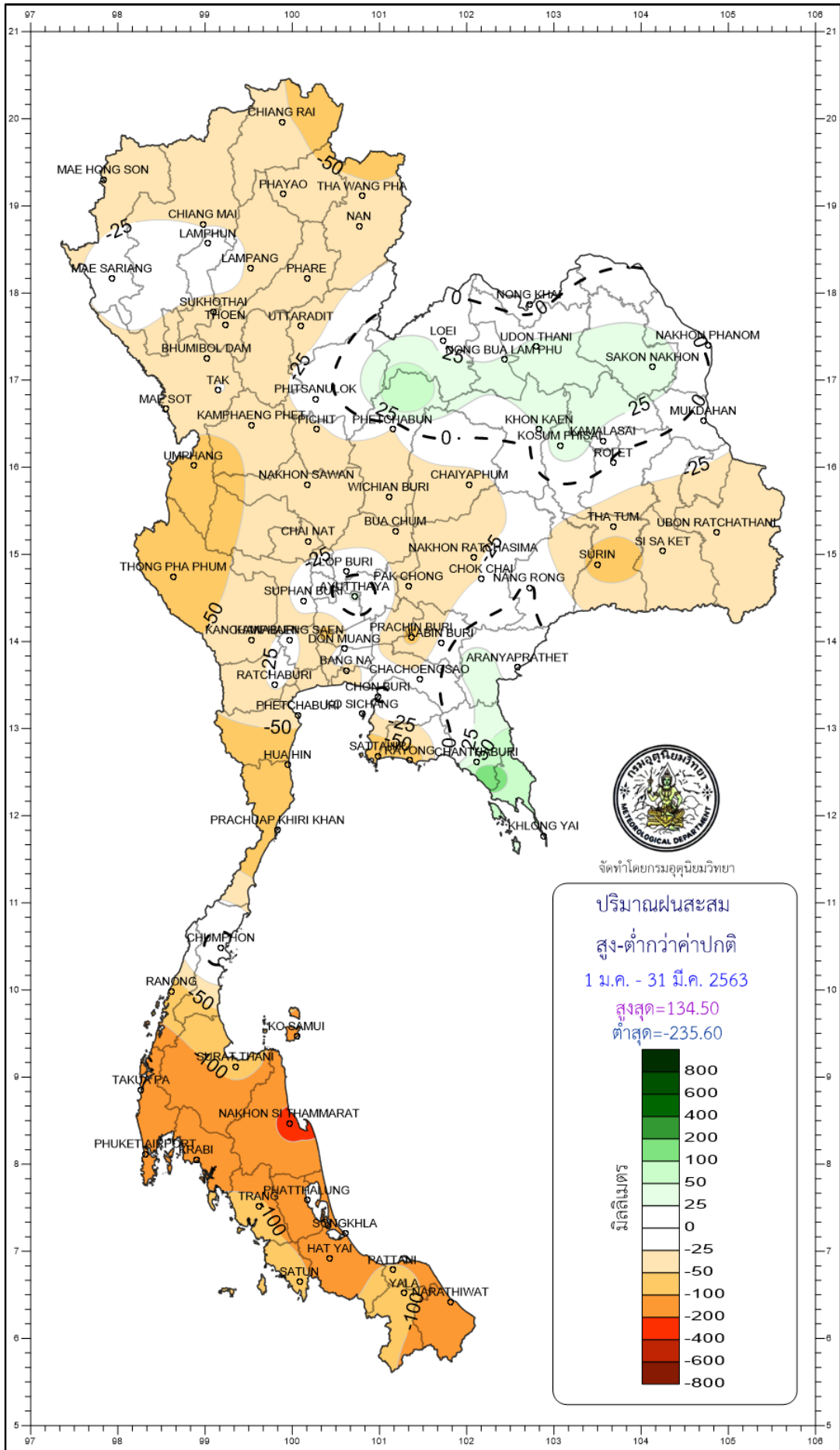


จัดทำโดยกรมอุตุนิยมวิทยา









จัดทำโดยกรมอุตุนิยมวิทยา

